

*ACOUSTIC GROUP*

# Application of Sylomer in Russia by Acoustic Group

December 13<sup>th</sup>  
2010

Customers of  
Acoustic Group

```
graph TD; A[Customers of Acoustic Group] --> B[PROJECTS]; A --> C[Typical solutions (without project)]; A --> D[RETAIL]; B --- B_desc[We control all stages of Sylomer application and final result]; C --- C_desc[We give only recommendation of Sylomer application]; D --- D_desc[We know nothing about Sylomer application];
```

PROJECTS

We control all stages  
of Sylomer application  
and final result

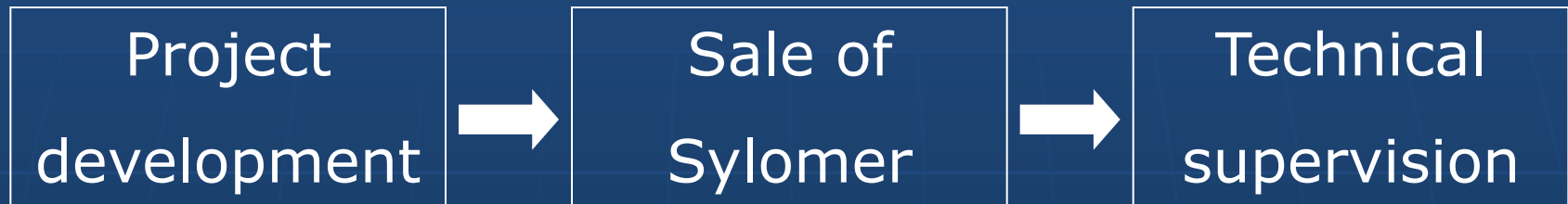
Typical solutions  
(without project)

We give only  
recommendation of  
Sylomer application

RETAIL

We know nothing  
about Sylomer  
application

# Scheme of our projects



Completed projects:

- ROCKWOOL training center, Zheleznodorognii
- Business center, Ozerkovskaya st., Moscow
- Hotel Mercure, Smolemskaya sq., Moscow
- Mariinsky Teater, Saint-Petersburg
- etc.

TOTAL: 12

Projects in progress: 7

# Example of our project

Object: Hotel Mercure

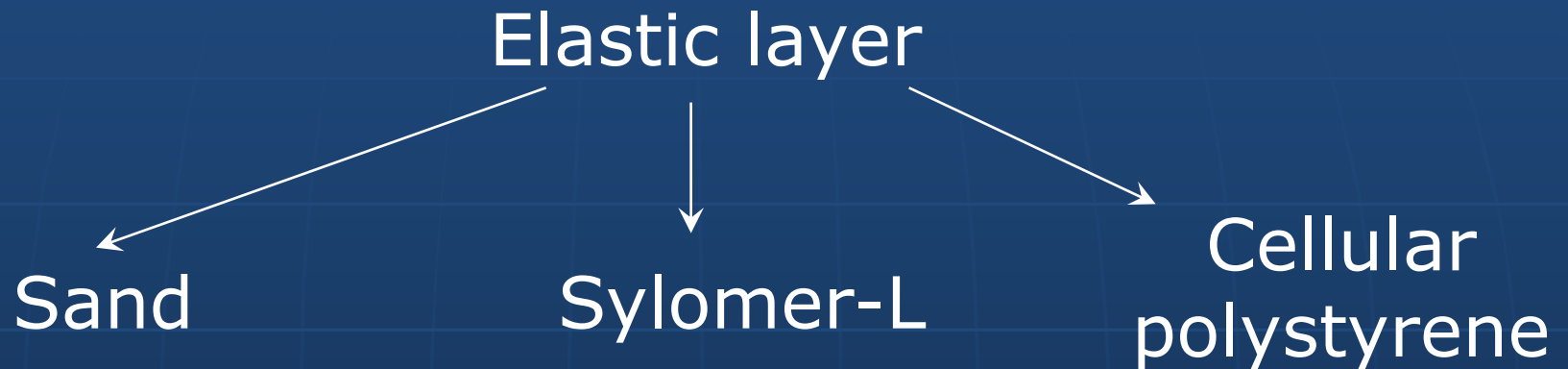
Address: 28, Smolenskaya sq., Moscow

Problems:

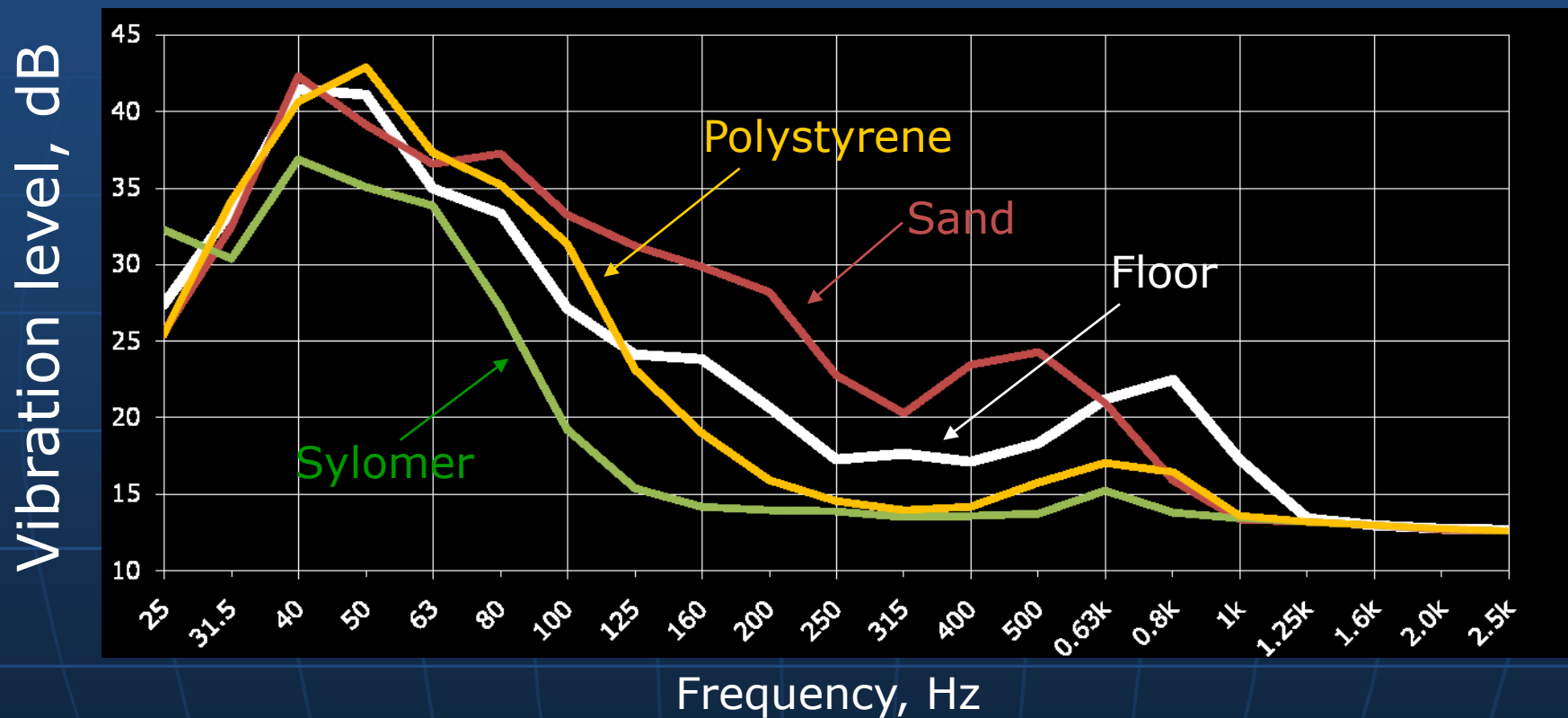
- noise and vibration from metro;
- vibration of engineering equipment;
- customer's doubt about necessity of application Sylomer.

# Preliminary natural measurements

## Three variants of floating floor

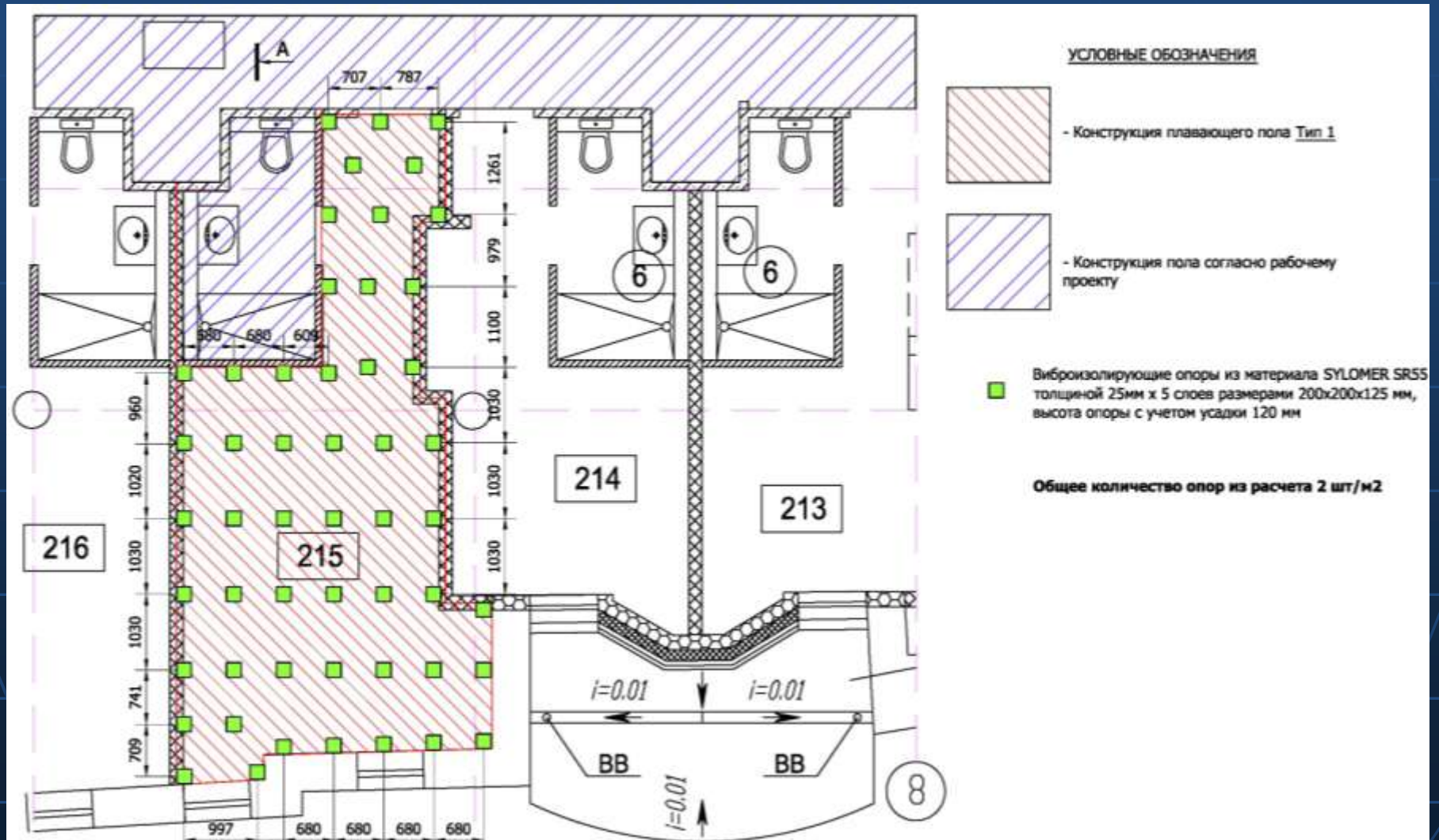


# Results of measurements



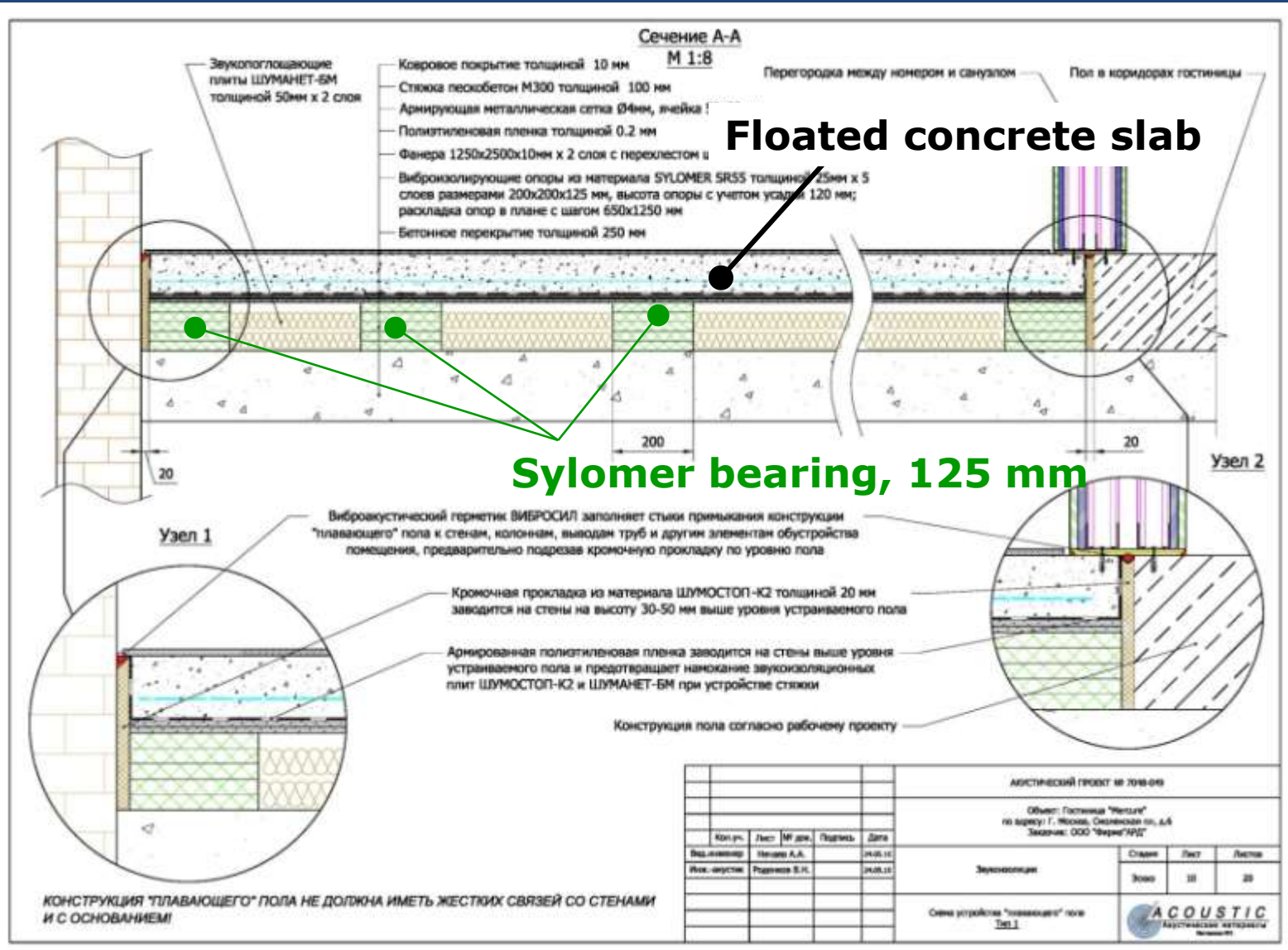
Sylomer was selected as elastic layer of floating floor.

# Typical hotel room



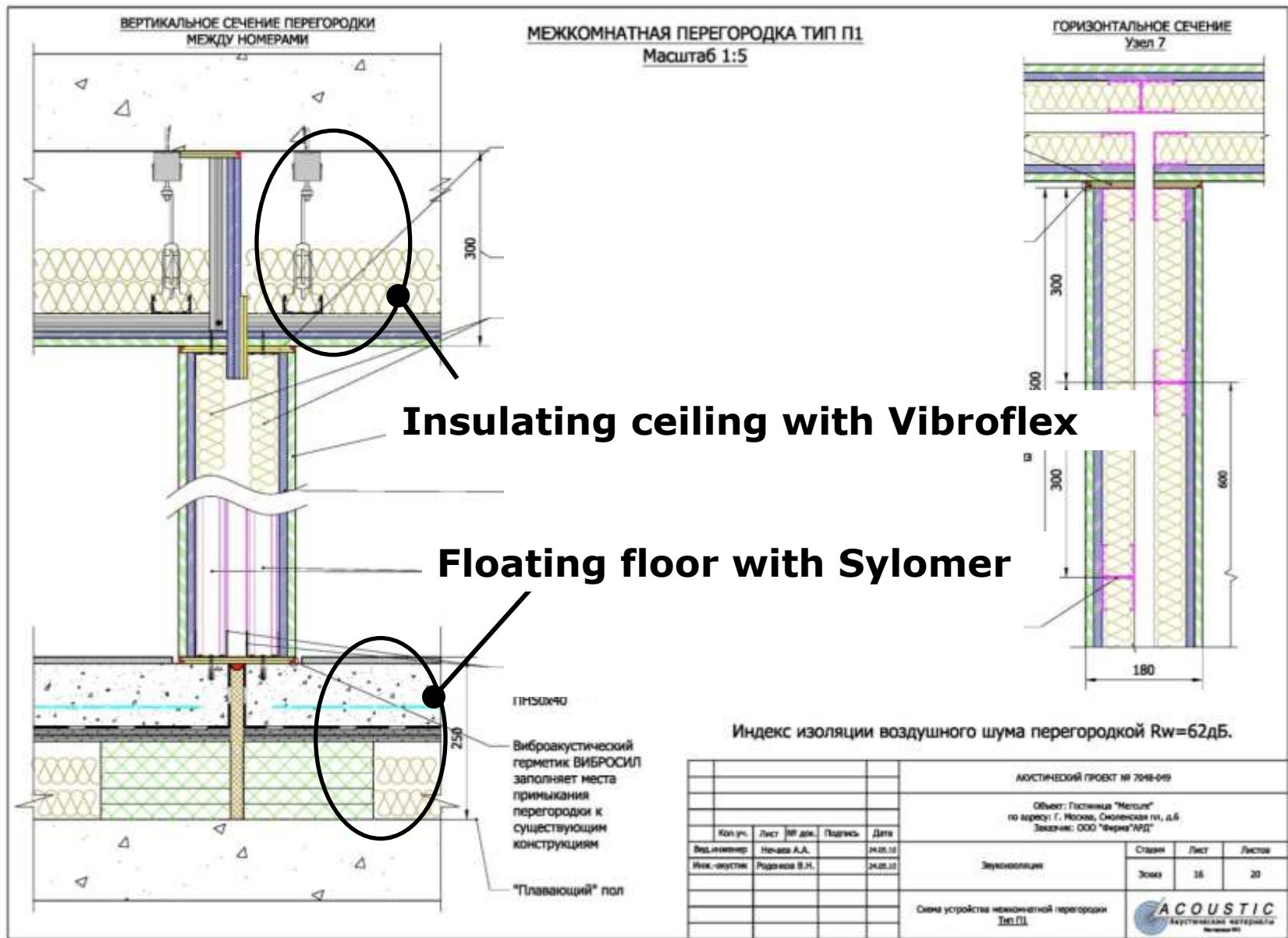


# Floating floor





# Main idea is "Separated boxes"



# Installation of floating floor

## Sylomer bearing



# Installation of floating floor

## Sylomer bearing



# Installation of floating floor

Sylomer bearing with mineral wool





# Installation of floating floor

## Concrete slab is completed

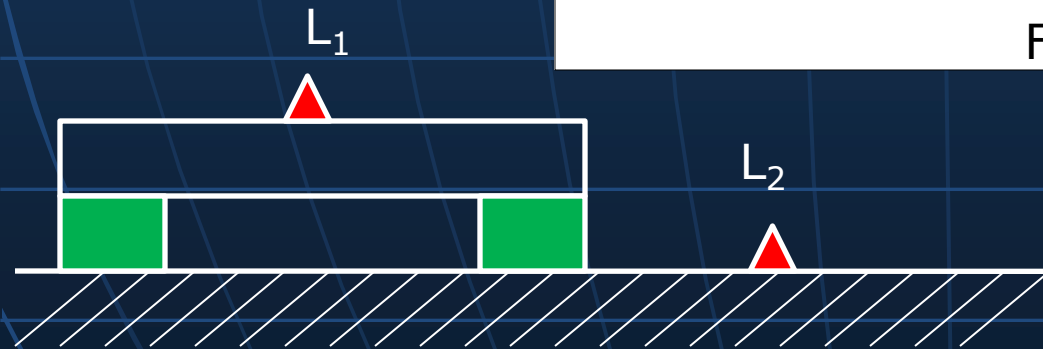
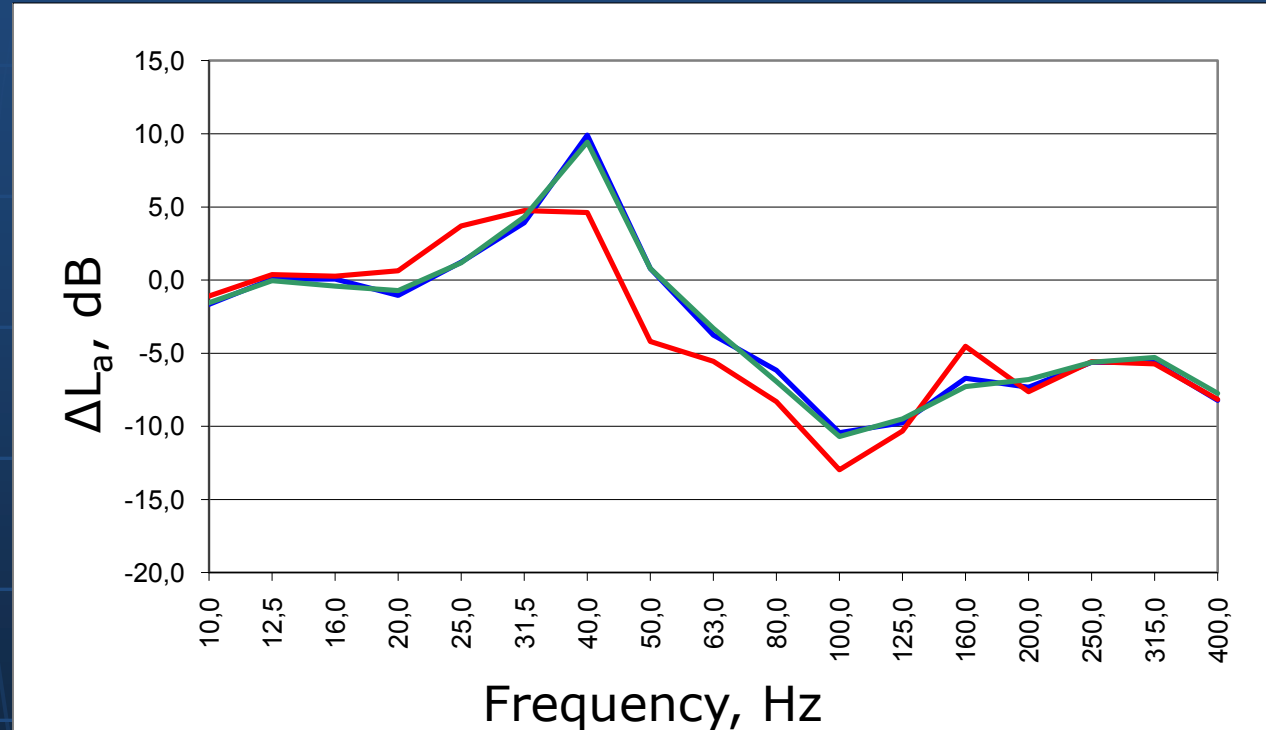


# Partitions are installed on the floating floor



# Vibration insulation by the floating floor

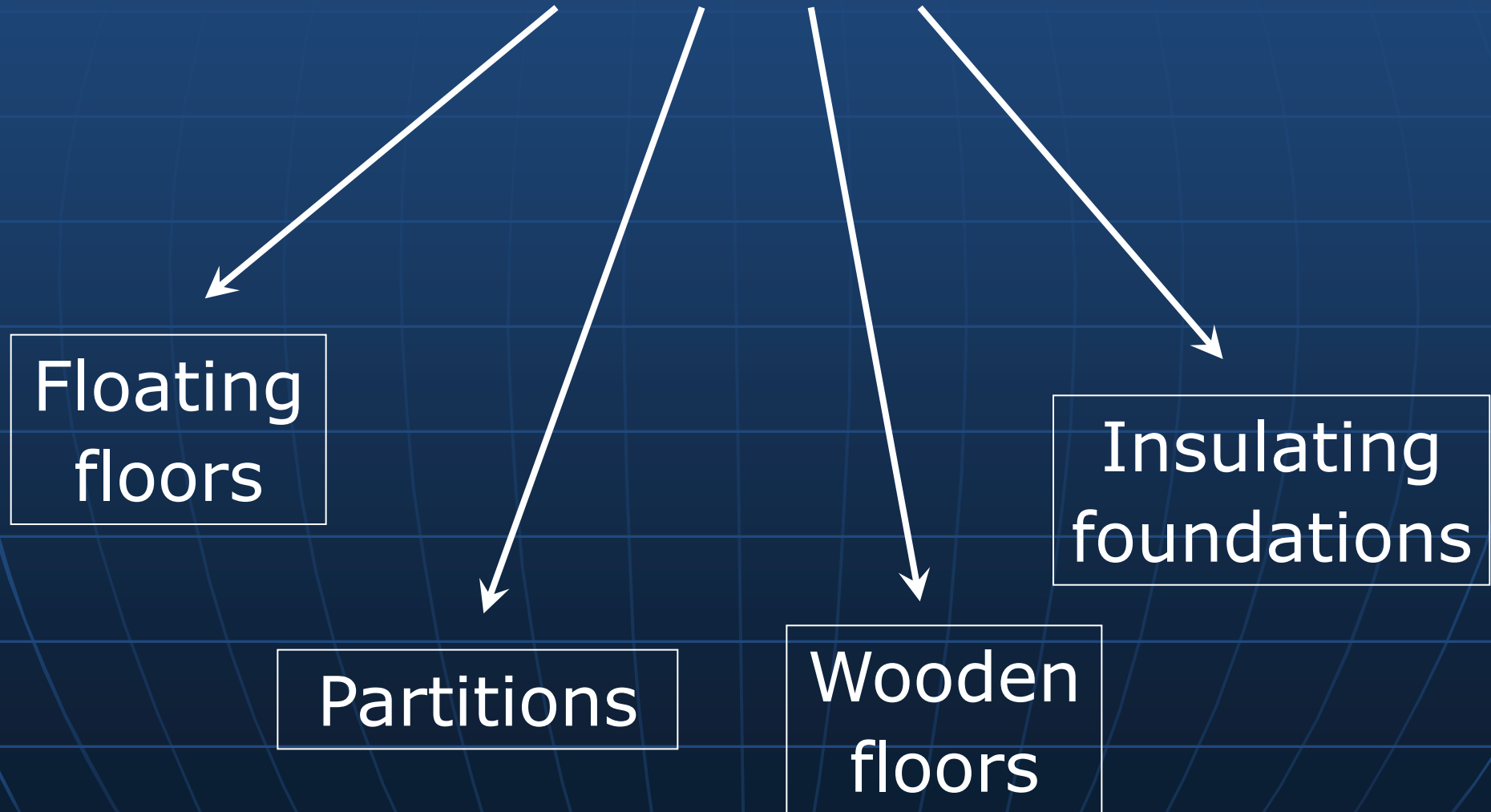
$$\Delta L = L_1 - L_2$$



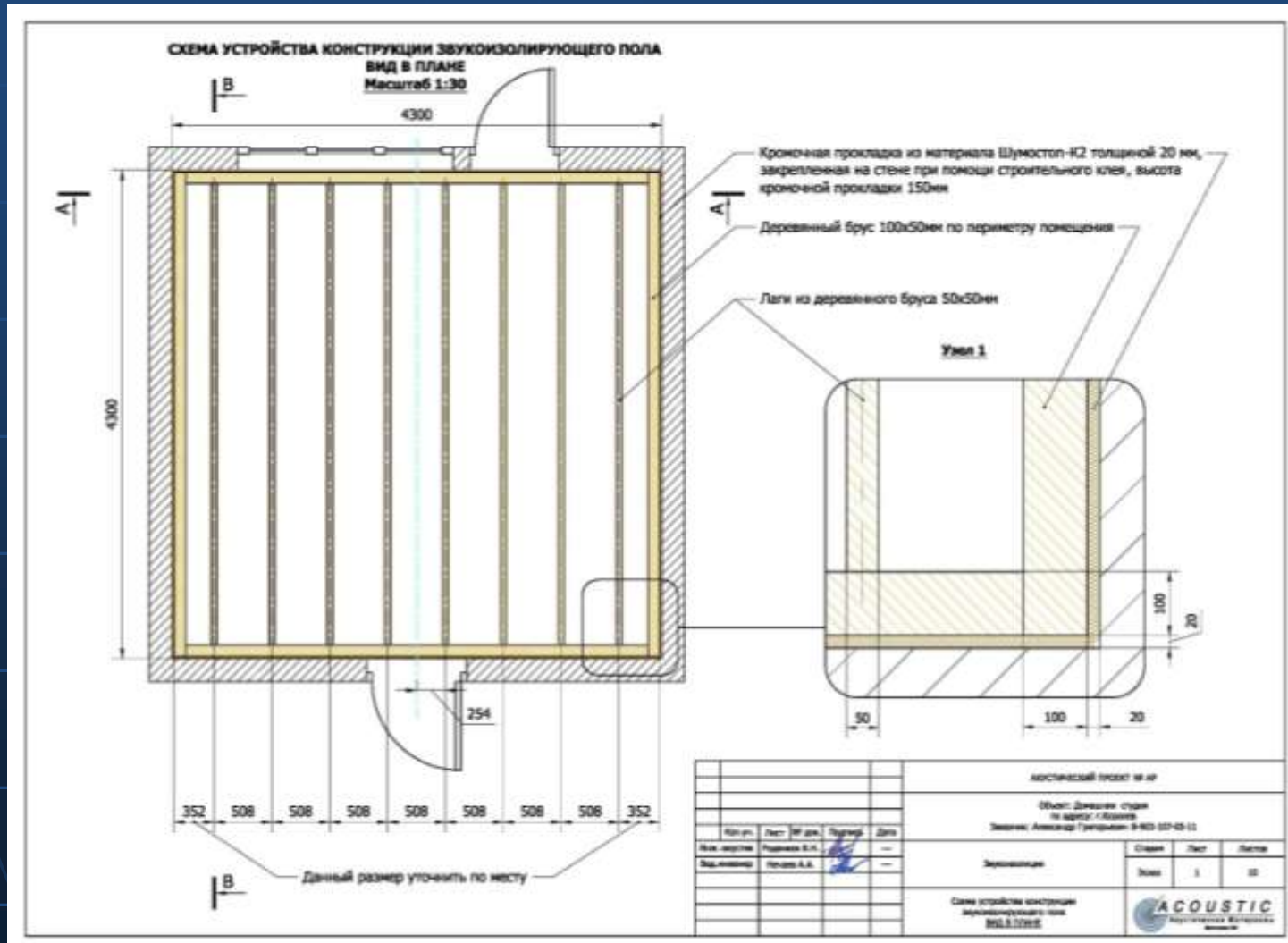
 - vibration detector



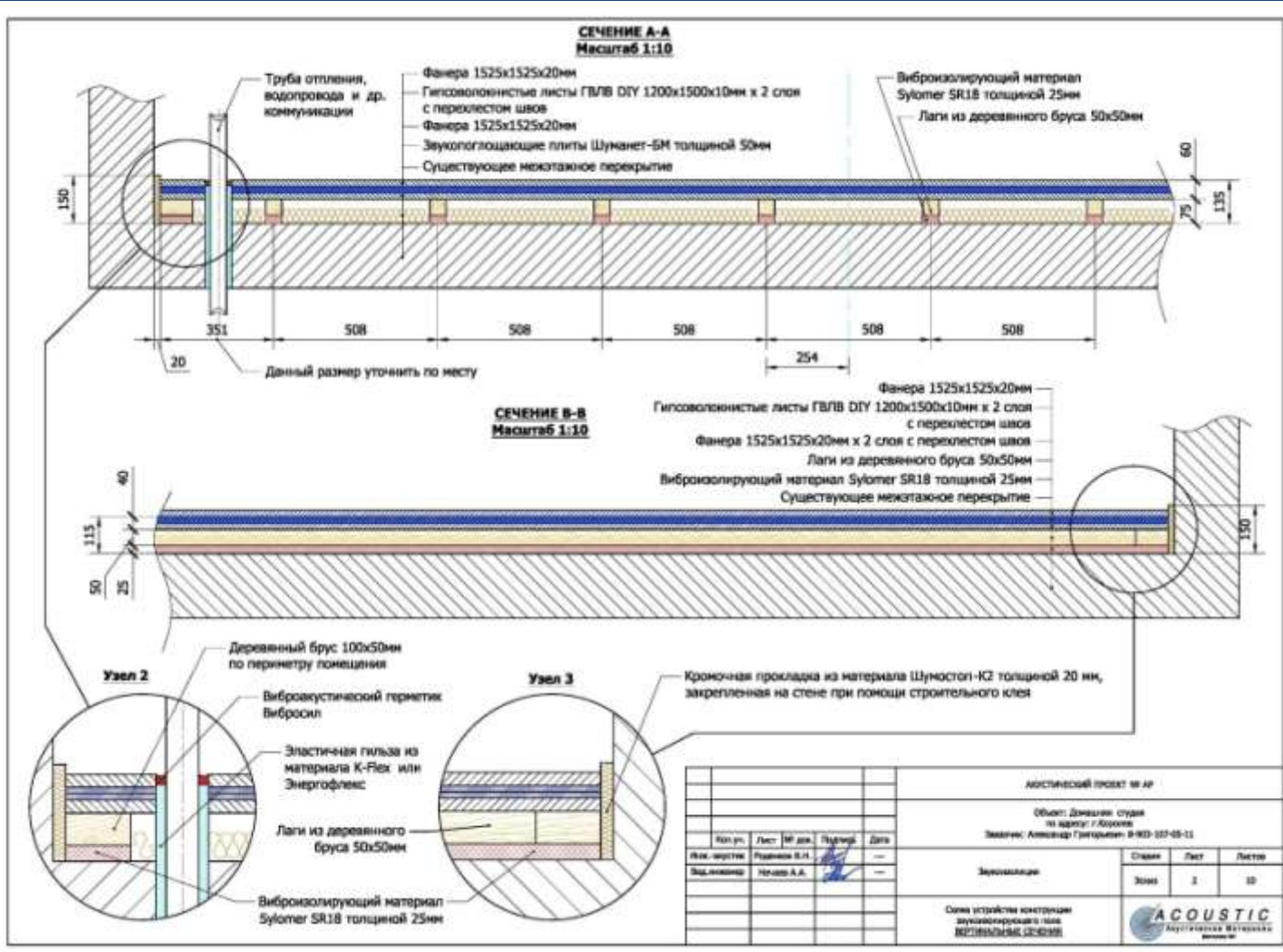
# Typical constructions with Sylomer (they can be proposed without project)



# Elastically supporting wooden floor



# Elastically supporting wooden floor



# Example of the insulation foundation for engineering equipment

At present this solution is typical for reduction of engineering equipment vibrations.

Objects:

Ventilations

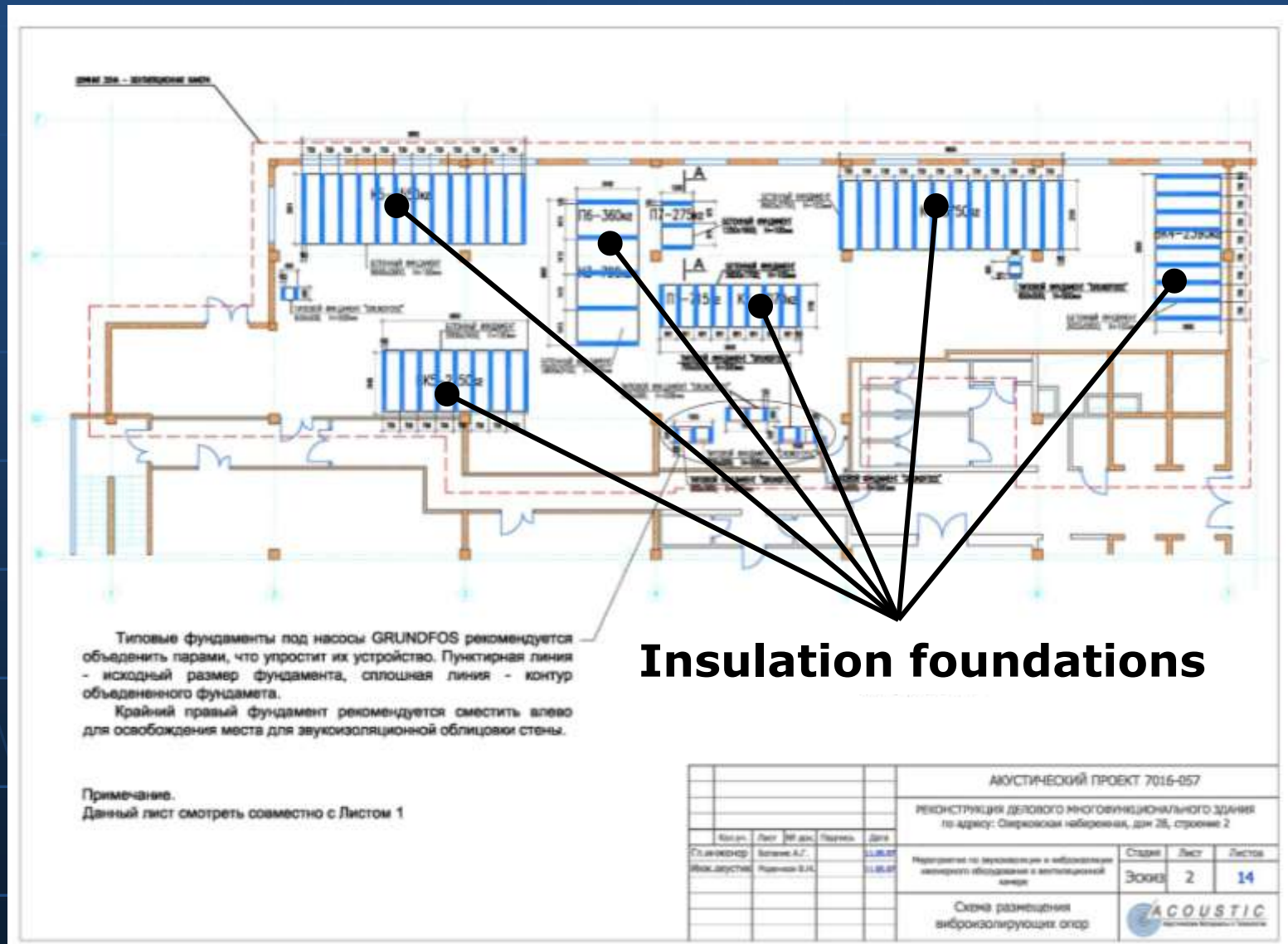
Refrigerators

Chillers

Voltage transformers

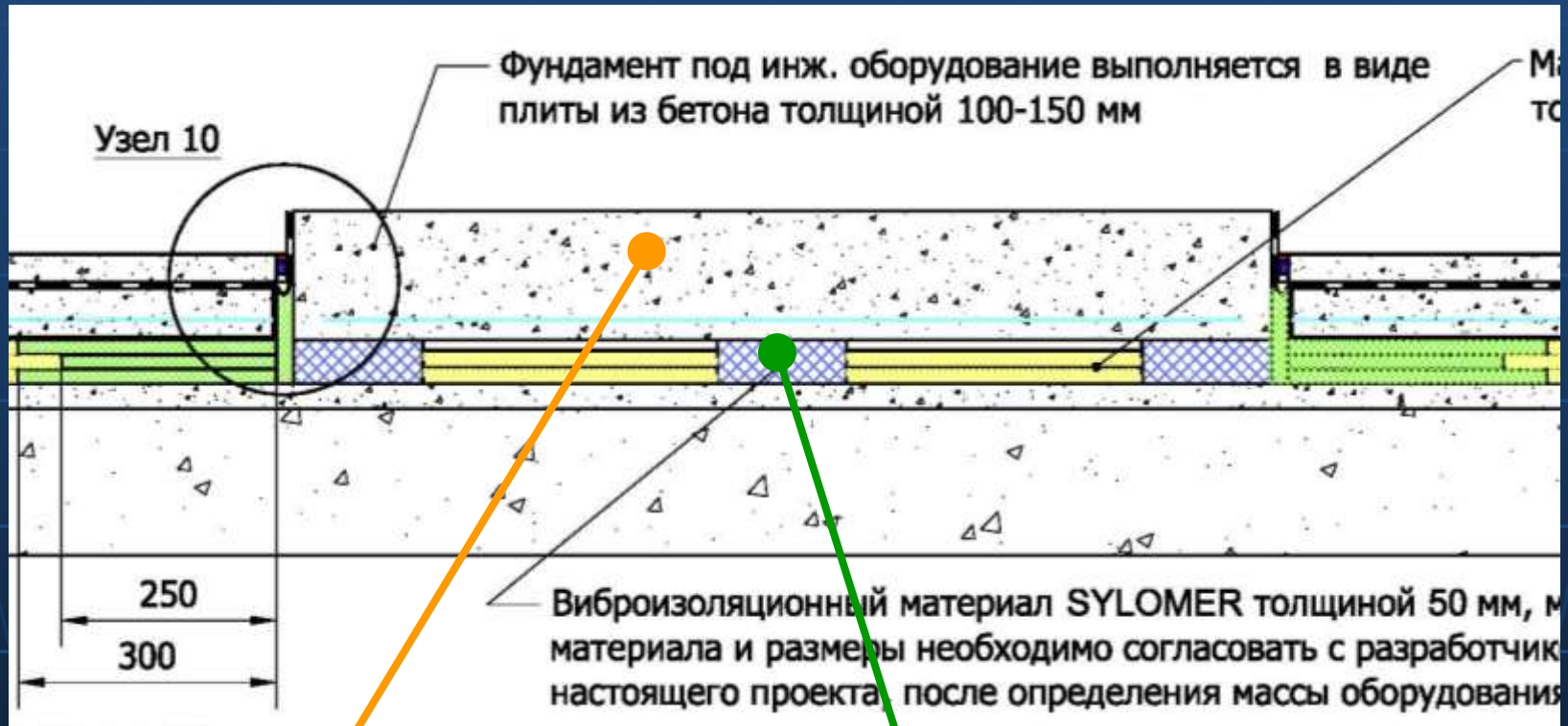
Pumps etc.

# Foundation for ventilation equipment





# Scheme of the insulating foundation



**Foundation**

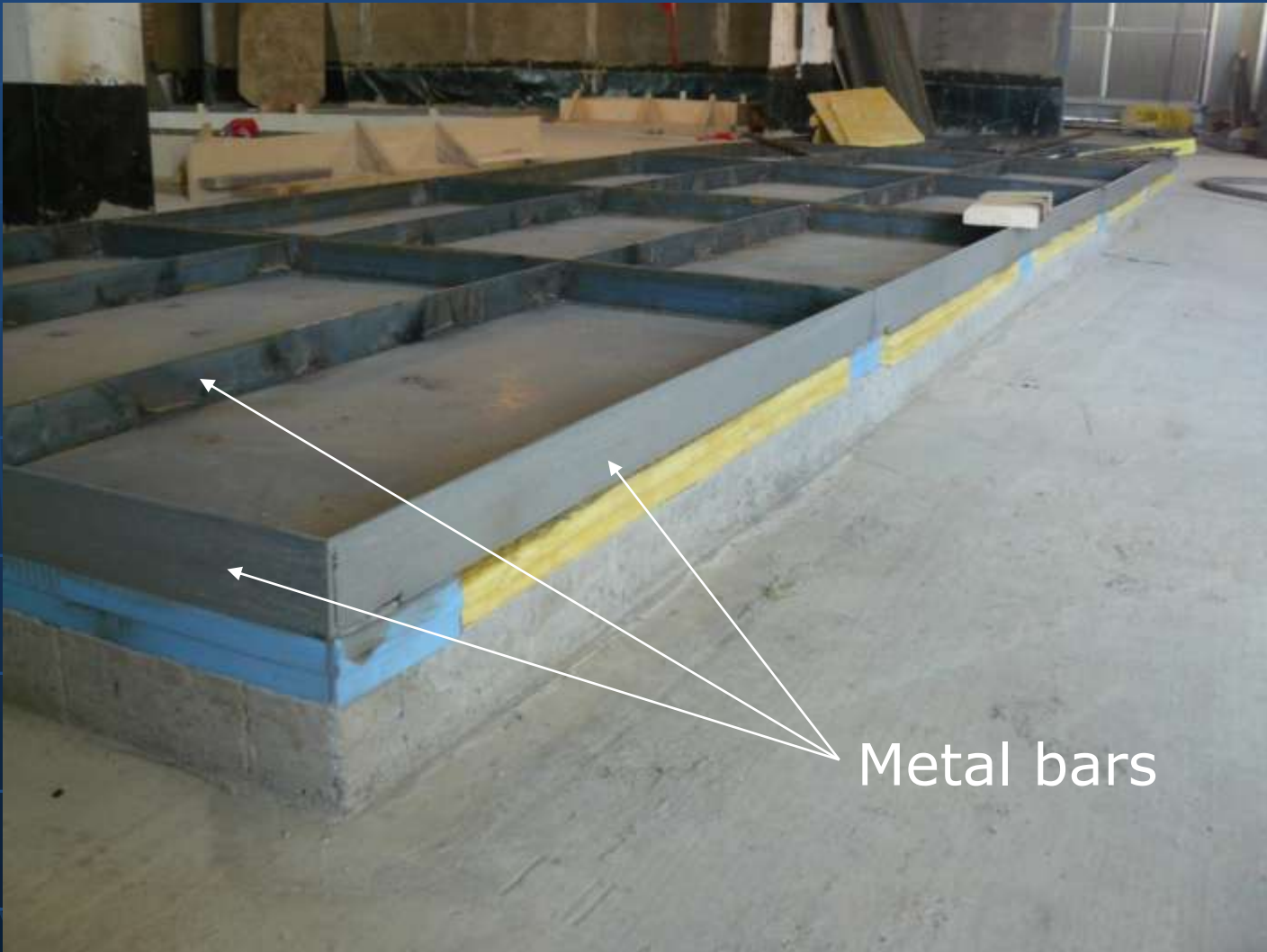
**Sylomer strip  
bearing**

# Sylomer strip bearings





# Reinforcement of the foundation



# Reinforcement of the foundation



Metal lattice

# Concrete foundation





# Ventilation equipment is on the insulating foundation



# Ventilation equipment is on the insulating foundation



# Vibration insulation of the elevator

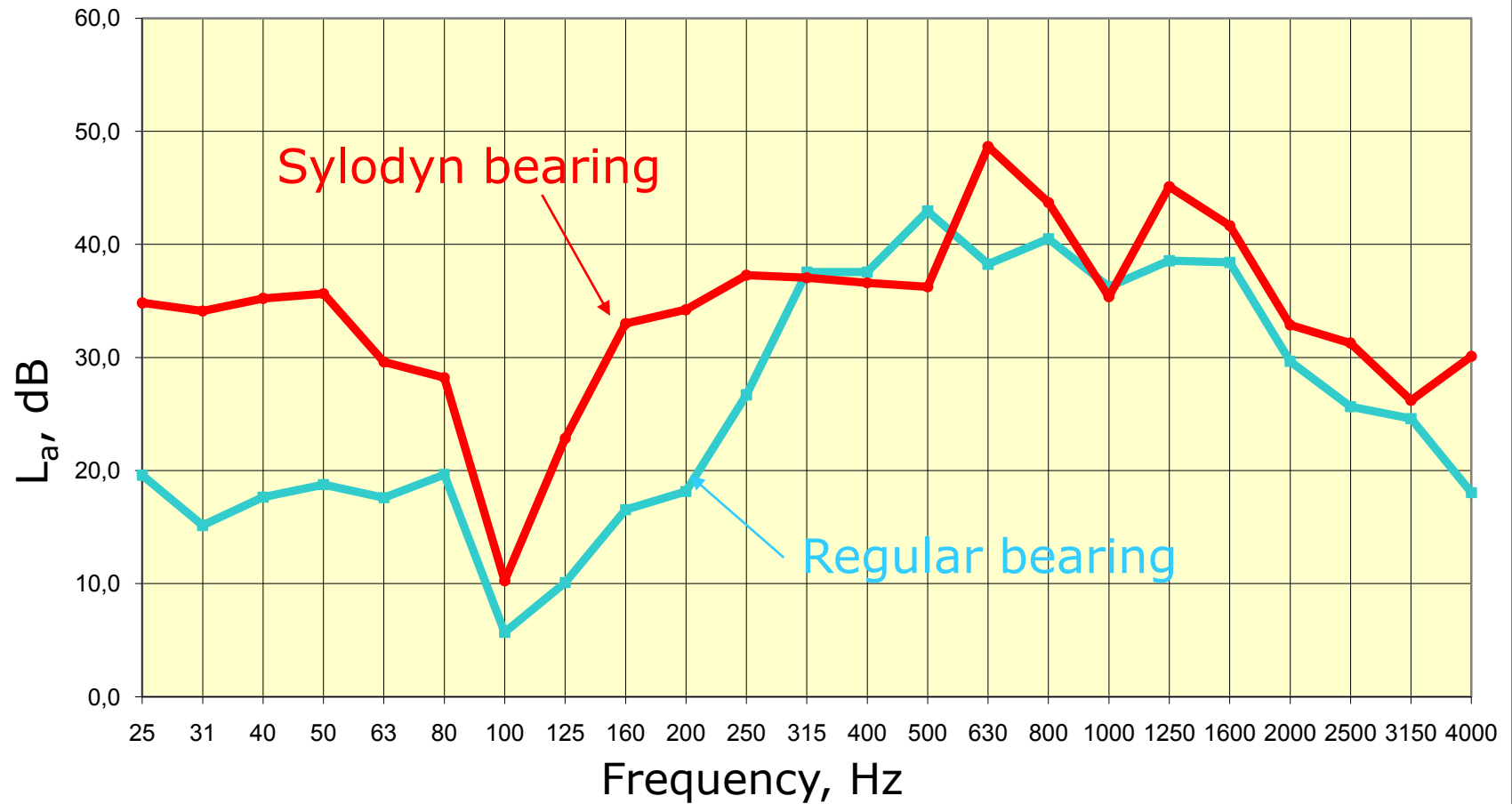


Regular  
bearing

Sylodyn  
bearing

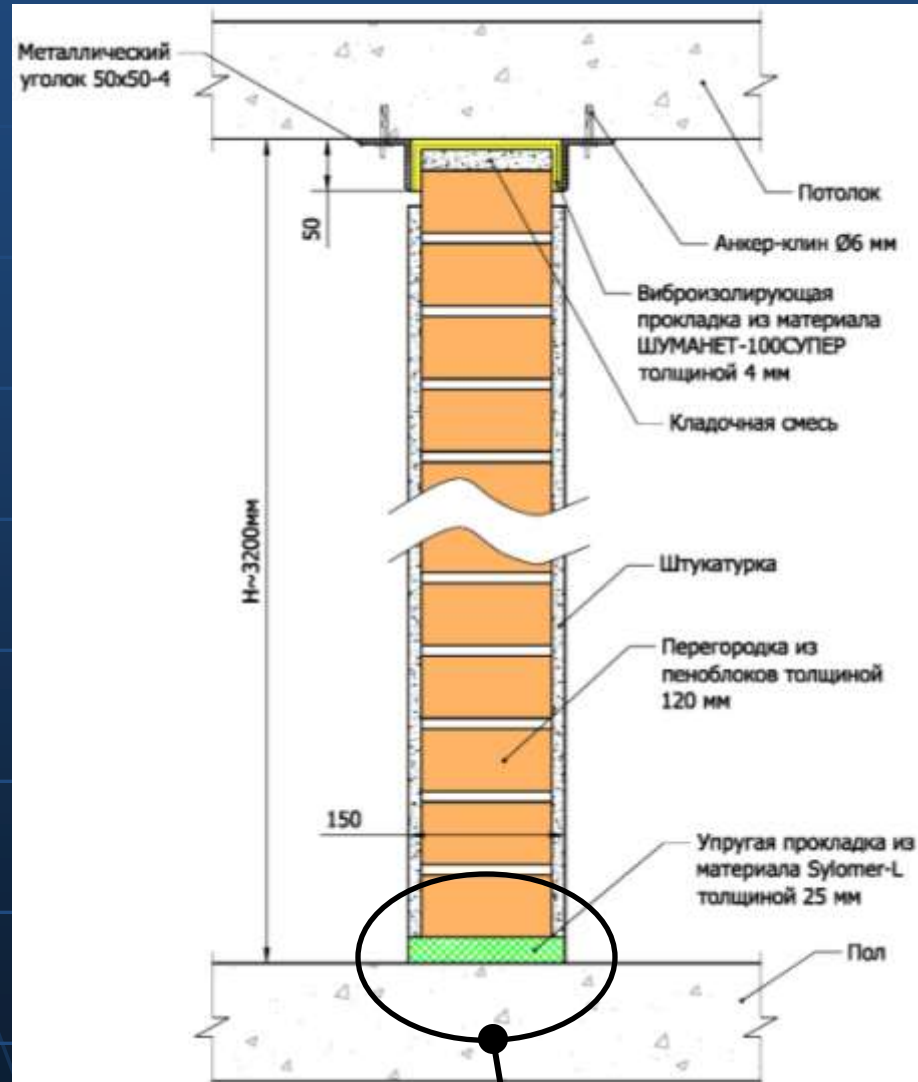


# Measured vibration reduction





# Partitions with Sylomer



**Floating floor with Sylomer**

# Partitions with Sylomer

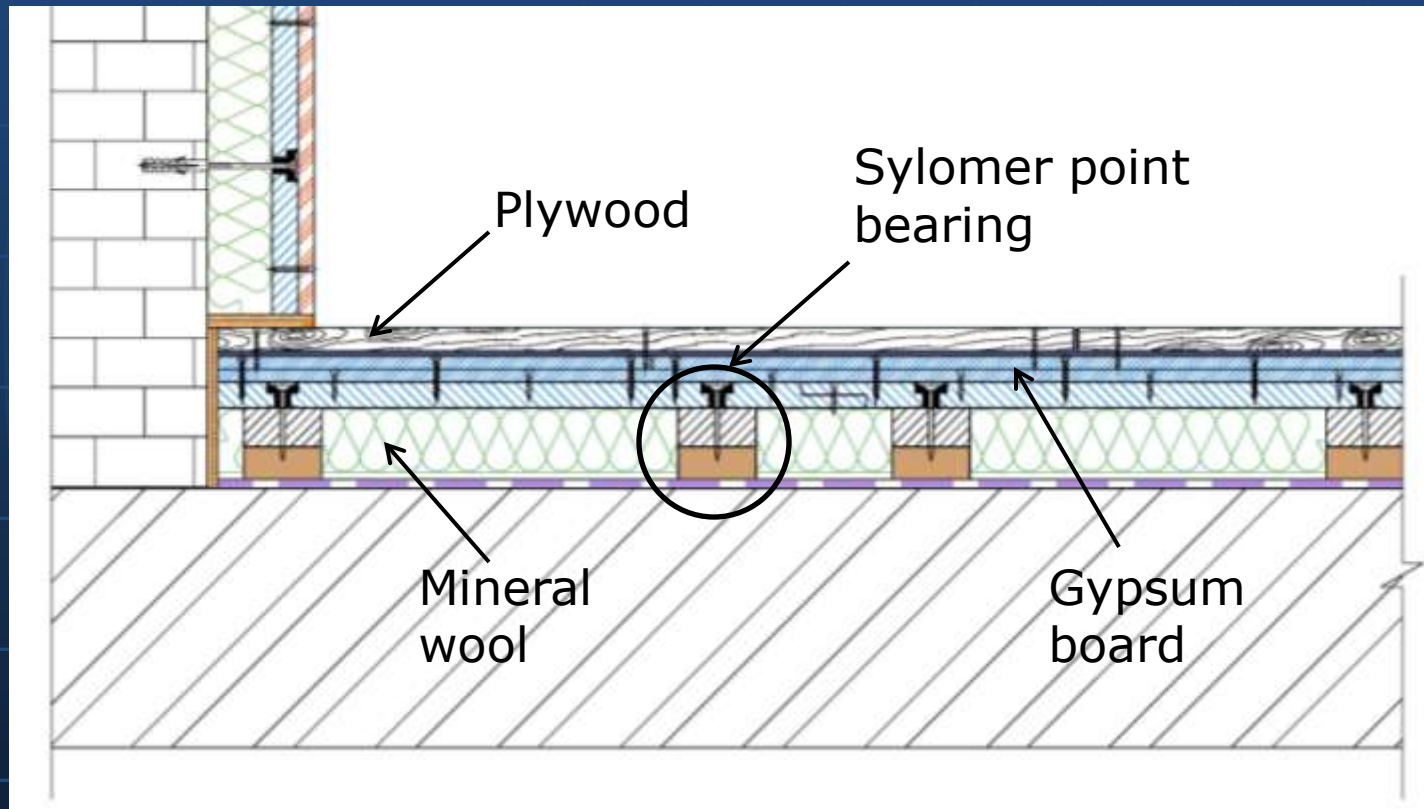


# Panel system for sound insulation (complete product)



Sylomer point bearing

# Structure of the panel system



Thank you for attention!